



Hard chrome griddle



CMG 410 SLKC

Smooth hard chrome gas griddle

CE

- Smooth steel plate, 12 mm thick.
- 30 μ (micron) hard chrome coating.
- Cooking surface: 367 x 495 mm (18 dm²).
- Power: 6 kW.
- Thermostatic control 100-300°C.
- Safety thermocouple.
- Electric ignition via push-button on the front. Power supply: 230 V.
- Supplied without runners. Open base

CMG410SLKC

L 400 – D 650 – H 900

- Option: door.

CPM 400

- Runners suitable for GN 1/1 containers on 3 levels, 100mm apart.

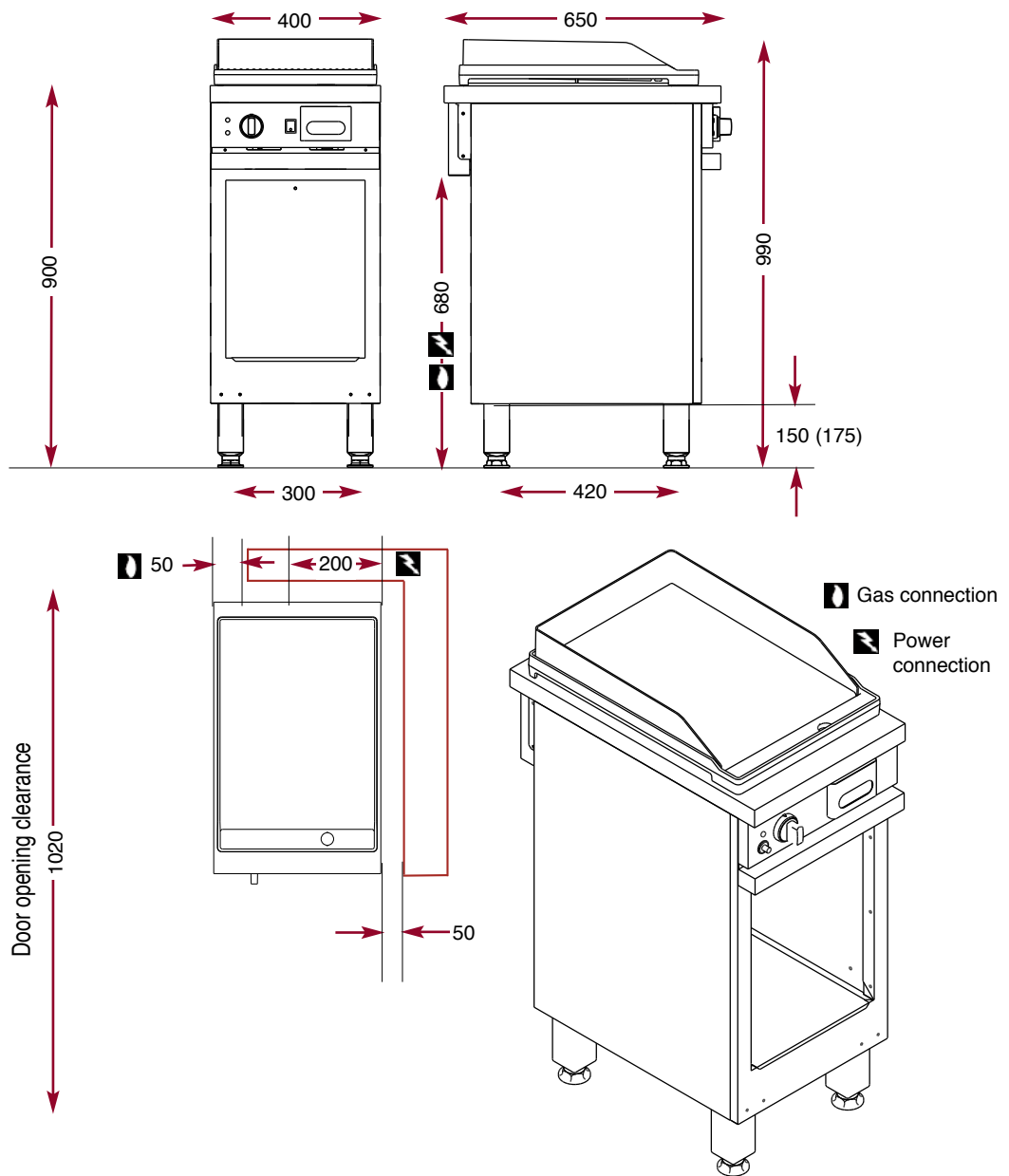
ECH 400

AMBASSADE
DE BOURGOGNE

The Chef's Choice.

Smooth hard chrome gas griddle

CMG 410 SLKC



Juice collection drawer.



The Chef's Choice.